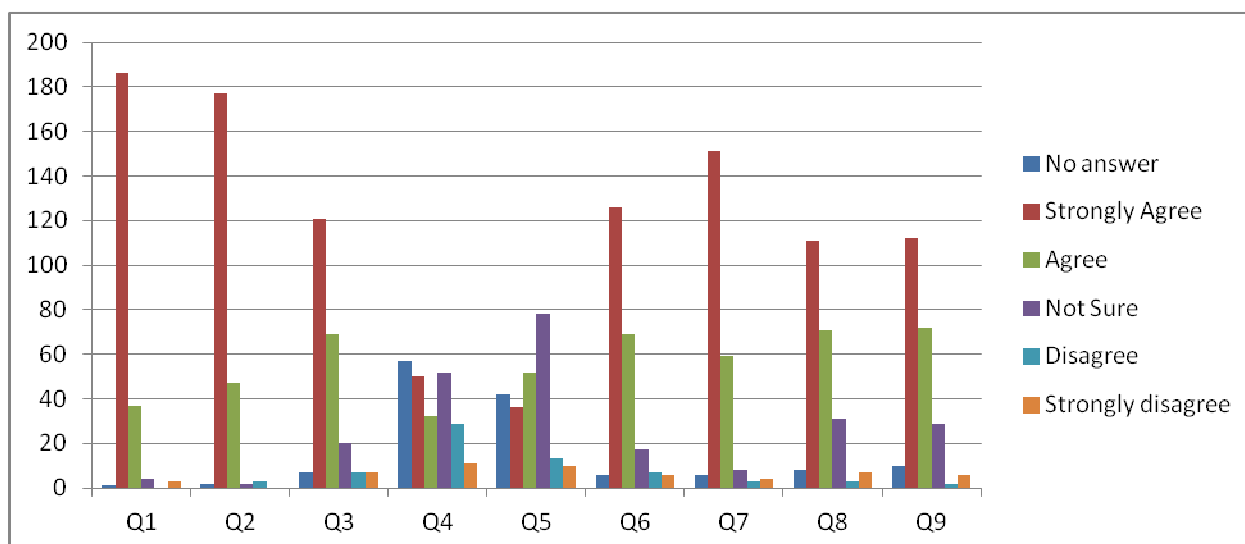


## **Combined Questionnaire Results** **totals**



The following are the combined results from the consultations:

Completed in total by 231 people



The following are the questions asked:

Q1 Do you think this project is a good idea?

Q2 Do you think Weedon needs more facilities for sports and recreation, the community and young people?

Q3 Do you think you or your family would benefit by having a new building like this in Weedon?

Q4 Are you part of a sports or recreational group who could make use of a room in this building? (Tell us below)

Q5 Do you know of other organisations outside of Weedon who might be interested in hiring this type of space?

Q6 Do you like the idea of watching football matches (or other sports) from a purpose designed building?

Q7 Do you think this is the best site in the village for this type of community building?

Q8 Would you be prepared to support fundraising events to raise money to help build this building?

Q9 Would you use this venue as a social space?